



Leigh Academy
Ebbfleet



Prospectus

Be Ready | Work Hard | Be Nice

Leigh Academy Ebbsfleet

is part of Leigh Academies Trust



Leigh Academies Trust is one of the country's largest and most-established multi-academy trusts operating across Kent, Medway and South East London. It contains primary, secondary and special academies and is highly inclusive and successful. Our mission is to deliver "education for a better world" by ensuring that young people in our academies have an excellent start in life regardless of their background or ability.



Our Values

We care

about our pupils and their families through our human scale approach to education, our staff and their well-being and the world around us, driven by our high ideals and strong moral values.

We have boundless ambition

to achieve excellence for all and create confident young adults with high levels of resilience and integrity.

We work together

as one team because we are greater than the sum of our parts. We foster an enterprising culture through global collaboration with partners in business and education.

We keep getting better


using our 'can-do' attitude towards continuous improvement and innovation.

For admission enquiries telephone: 01322 242252

Or email: admissions@ebbsfleet.latrust.org.uk

Contents

Use our contents page to navigate your way through our prospectus

- 
- | | | | |
|----|--------------------------------|----|--|
| 03 | Welcome | 09 | Clear Expectations |
| 04 | Our Colleges | 10 | Sixth Form - Preparing for Life Beyond |
| 05 | Student Life | 11 | The Resilience Hub |
| 06 | IB Middle Years Programme | 12 | Admissions |
| 07 | Chromebook for Learning Scheme | 12 | A Family of Schools |
| 08 | Life Outside the Classroom | | |
| 08 | We Transform Lives | | |
| 09 | High Aspirations | | |

Welcome



‘The school has exceptionally high expectations of pupils’ behaviour and conduct in lessons and around the site.’

Ofsted, December 2024

Be Ready | Work Hard | Be Nice

Your child’s education

Preparing them for learning and life beyond...

Welcome to Leigh Academy Ebbsfleet, where we are committed to doing whatever it takes to make sure all our students receive an outstanding education and achieve exceptional things. We are an extremely ambitious school community and believe there are no excuses for not achieving your absolute potential. We know that you want the very best for your child, a school where they will achieve academic excellence, grow in confidence and develop a skill set that will allow them to excel in the challenging and complex world.

At Ebbsfleet our family approach means we know our students as individuals. We understand their needs and pay close attention to supporting them to be their very best. Our aim is to ensure that through excellent teaching, a rich and varied curriculum and through experiences beyond the classroom, all Ebbsfleet students will not only be immensely happy and enjoy every day at school, but will ultimately have the attributes and qualifications they need for the career or university of their choice.

We look forward to working together and to welcoming you and your child to the Ebbsfleet community.

Ms Gurjit Kaur Shergill
Principal

Our Colleges

The Academy is organised into two Colleges - Attenborough and Seacole. They are names of inspirational leaders who have made a difference to society.

Each College provides pastoral care for approximately 75 students from each year group, led by the Head of College, who is supported by Assistant Heads of College, Heads of Key Stage and Pastoral Leads.

Students in Year 7 to 11 are placed in mixed ability but single year tutor groups and have dedicated tutor time each day where they follow our excellent pastoral curriculum. In Year 7 and 8 students are taught in College class sets, with all students accessing the same academic and pastoral curriculum.

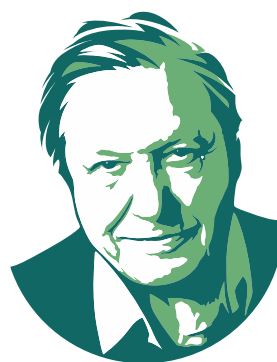
Leigh Academy Ebbsfleet actively encourages the competitive element of inter-college competitions through termly events that are linked to all aspects of the Academy life.

Mary Seacole College



Mary Seacole was born in Kingston, Jamaica, in 1805. Mary's mother had an interest in herbal medicines, and passed this knowledge on to Mary. In 1850, Kingston was hit by a cholera epidemic, and Mary used herbal medicines to fight this disease, as well as an outbreak of yellow fever. Her fame as a nurse quickly grew, and she was soon carrying out operations on soldiers injured in war. When Mary heard about the cholera outbreak during the Crimean war, she wanted to help, and travelled to London. However, her help was refused. Undeterred, Mary used her own money to travel to Crimea and treated patients on the battlefield.

David Attenborough College



David Attenborough is a broadcaster, biologist, natural historian and author, who is well known for presenting many documentaries about the natural world. As a child, he was very interested in animals, and spent lots of time hunting for fossils. He went on to study Natural Sciences at Cambridge, and received his Masters degree in 1947. He is a great communicator, educator and campaigner, and is one of the most travelled people in history, having visited every continent on Earth. He is the oldest person to have been to the North Pole, and has 10 species of plants and animals named after him. He has narrated many wildlife documentaries, such as 'Life on Earth' and 'Blue Planet.'



‘The school encourages pupils to become responsible, respectful and active citizens.’

Ofsted, 2024

Student Life

From the moment they start at Leigh Academy Ebbsfleet, students study a full range of subjects; all of which are designed to offer them new and exciting opportunities. Our academic curriculum is broad and balanced. It includes a focus on mastery of the basics, with a strong emphasis on literacy and numeracy. The curriculum offers appropriate challenges and support, enthusing students about their learning. It provides numerous and varied opportunities for enrichment and character development, preparing students for life as competent, confident and responsible citizens.

As well as the core subjects of English, maths and science, students have the chance to find their interests and talents across many other disciplines including history, geography, technology, art, textiles, food technology, computer science, PSHE, languages, religious studies and PE. When it is time, students choose from this range of subjects, as well as some additional choices, when making their selection for examination subjects in Year 11 and beyond.

We understand the importance of learning and focus on the quality of education to generate maximum impact in the classroom to ensure that the sharing of knowledge is memorable. We recognise that students are both smart and full of potential when they arrive with us and our aim, through delivering quality education, is to support them on their journey through Leigh Academy Ebbsfleet so that they leave smarter and prepared for life beyond school.

Communicating effectively and regularly is a priority for all teachers and staff at Leigh Academy Ebbsfleet and we are committed to ensuring that you are kept fully informed about your child's performance. During each academic year you will receive regular updates about your child's progress and effort as well as information about their attendance and attitude to their learning.

International Baccalaureate Middle Years Programme (MYP)

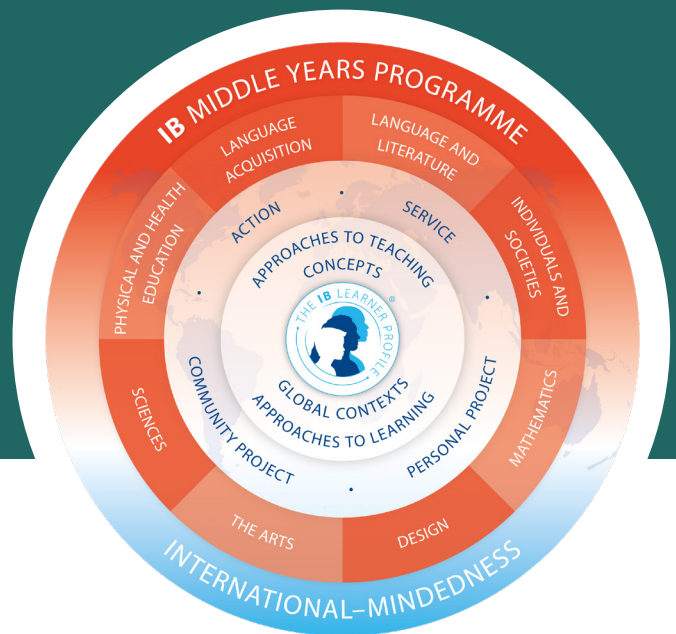
Leigh Academy Ebbsfleet is a Middle Years Programme (MYP) candidate school and deliver this in Key Stage 3, and as such the Teaching and Learning follows the IB philosophy of:

- encouraging international-mindedness in our students, starting with a foundation in their own language and culture;
- promoting a positive attitude to learning by challenging our students to solve problems, show creativity and resourcefulness, and participate actively in our community;
- providing tasks and activities that allow our students to see the connections among the subjects themselves, and between the subjects and real issues;

Find out more about the IB on our website by **clicking here**.



- supporting the development of communication skills to encourage enquiry, understanding and language acquisition, and to allow student reflection and expression; and
- emphasising, through the learner profile, the development of the whole student – physically, intellectually, emotionally and ethically.



© International Baccalaureate Organisation 2024

Within the Middle Years Programme at Leigh Academy Ebbsfleet students will experience:

Teaching and learning in context

Students learn best when their learning experiences have context and are connected to their lives and the world that they have experienced. Using global contexts, students explore human identity, global challenges and what it means to be internationally-minded.

Conceptual understanding

Concepts are big ideas that have relevance within specific disciplines and across subject areas. Students use concepts as a vehicle to inquire into issues and ideas of personal, local and global significance and examine knowledge holistically.

Approaches to learning (ATL)

A unifying thread throughout all MYP subject groups, approaches to learning provide the foundation for independent learning and encourage the application of their knowledge and skills in unfamiliar contexts. Developing and applying these skills help students learn how to learn. The ATL that are developed are; Communication, Social (Collaboration), Self-Management, Research and Thinking.

Chromebook for Learning Scheme

The Academy has moved into a new era where all pupils are provided with their own personal 1-1 device. Whilst some form of digital technology and blended learning has been present in the Academy we are now ensuring that our teaching and learning pedagogies are embedding this effectively.



‘By digital technology we mean the use of computer and technology assisted strategies to support learning within schools. Approaches in this area vary widely, but generally involve: technology for students, where learners use programmes or applications designed for problem solving or open-ended learning; or technology for teachers, such as interactive whiteboards or learning platforms’.

Education Endowment Foundation (EEF)

Providing pupils with personal 1-1 devices introduces a new strand to our digital technology strategy where teaching approaches and pedagogies will be enhanced and more effective learning opportunities created. Pupils having their own devices can extend and broaden pupils' learning environments beyond the classroom, without limitations, to a ‘learn anytime, learn anywhere’ philosophy.

The implementation of digital technologies and use of applications for teaching practitioners are equally broadened, further enhancing the delivery of a broad and balanced curriculum. Opportunities for practitioners to deliver a more cohesive, blended learning approach can be strategically implemented to further differentiate learning, creating more personalised experiences that incorporates pupils to become more digitally able and independent. Providing pupils with the facilities, resources and knowledge to learn via electronic and online media, as well as traditional face-to-face teaching, will ensure that we maximise the best of both aspects to ensure greater personalisation and supporting pupils to become more well rounded learners ready for the next step in their chosen pathway. Students who are adept to using technology throughout their learning and education journey at the Academy will be prepared for Further and Higher Education and to enter the workplace of choice and it will equally prepare those who are keen to study more specialised courses or careers where technology is the focus.

Our digital vision extends to developing our practitioners competencies with digital applications and technologies whereby they have all secured their Google Level 1 certification and those whose role and responsibilities, and some who aspire to, achieve the Google level 2 certification. Creative learning opportunities will be developed by teachers who are technologically minded and digitally skilled and this will be embedded as part of a timely and appropriate CPD programme.

Life Outside the Classroom

Experiencing life outside the classroom

A time to explore and discover

We know that learning does not just take place in the classroom. Leigh Academy Ebbsfleet is proud of its extensive and stimulating enrichment programme that promotes students' all round development. All students have the opportunity to participate in a wide ranging and character building enrichment programme.

Our current programme includes a diverse range of sporting, academic, cultural and creative pursuits, such as archery, cookery and the Duke of Edinburgh scheme. We firmly believe that exciting opportunities not only bring learning to life, but make life long memories and help develop high levels of self-esteem and confidence.



We Transform Lives

Our staff of highly qualified, dynamic teachers care about and believe in every student. They are motivational role models who know how to bring the curriculum to life and inspire success. They have a passion for their specialist subjects and utilise every second they have in front of the students. Through knowing their students and what they need to improve on, in order to be smarter, teachers can share their knowledge, so students are excited by lessons and want to learn more.

Lessons at Leigh Academy Ebbsfleet are planned around sharing knowledge and making it memorable. We do what is right for all our students, to raise their self-esteem and increase their expectations to be smarter. We know each of our students and how we can support them on their educational journey through the academy.

High Aspirations

We use a range of ways to ensure we understand your child's progress. We assess the impact of our teaching through formal assessments as well as regular testing. Gaining a clear insight into students' progress means we can constantly evaluate our lessons and personalise our approach.

Homework plays an important role in supporting learning and also in ensuring we help students to be independent and develop important self-management skills. A homework schedule is issued at the start of the year that helps students and their families plan how best to manage learning at home. We use an online platform to set and complete tasks, which means students and their families have constant access to the tasks, deadlines and resources that teachers set.

Our highly experienced learning support staff work alongside students to make sure there are no barriers to their success. Specialist support is promptly put in place to ensure students with additional needs realise their academic and social potential. Throughout their time at Leigh Academy Ebbsfleet, each student's curriculum is complemented by high quality careers education, which aims to open up their aspirations for the future.

Clear Expectations

Leigh Academy Ebbsfleet promotes good manners, respect, honesty, integrity and personal responsibility. We expect the highest standards of conduct and good manners at all times. Our view is that lessons will be uninterrupted and that all students have the space and time to focus on maximising their effort to secure exceptional progress.

We aim to promote in our students a strong culture of achievement, aspiration and ambition for success. Our approach to pastoral care and support ensures that we know each student as an individual. Understanding their needs and personality means we can provide the highest levels of personal guidance and development. We recognise that academic achievement and good discipline can only flourish in an atmosphere in which students feel valued and secure.

Over time, our specialist pastoral staff gain an excellent knowledge of the students in their care, monitoring student progress and wellbeing to ensure we are doing everything we can to secure their success. Good behaviour and endeavour are positively promoted and frequently acknowledged by achievement points, praise and rewards including Leigh Academy Ebbsfleet 'Key to Success' badges. We believe that acknowledging achievements motivates students and plays an important role in academy life.

'My daughter loves coming to school. All the different experiences she has enjoyed have helped her to become a confident and happy young person'

Parent



Sixth Form - Preparing for Life Beyond

After completing Year 11, students have the option to join the Leigh Academy Ebbsfleet sixth form, LAE6, where we value aspiration, excellence and professionalism. We encourage students to follow their own pathway to realise their goals and aspirations. For some that will be to move on to university and for others it will be to pursue their chosen career.

By offering A Levels and vocational qualifications in a variety of different subjects we support all students on their journey. LAE6's fantastic programme of study has been developed to support a wide range of potential future careers. This means we offer choice and our students benefit from learning powerful knowledge and important skills that will prepare them for their chosen futures.

LAE6 offers students an environment where they are treated as young adults. They wear business dress not uniform, have access to dedicated facilities and benefit from a staffed study room to give them space to learn. Throughout the year there is a dedicated focus on careers and university information and guidance. Each student also has the opportunity to complement their studies with a personalised work experience programme, equipping them with the key employability skills needed to navigate their next steps. This period of their education is full of exciting opportunities and enriching challenges. Students enjoy a range of trips, visits and development opportunities.

LAE6 provides the experience, skills and qualifications needed for the next stage of their lives.

'LAE6 is giving me the opportunity to study subjects I enjoy and the confidence to excel'

Student



The Resilience Hub

At Leigh Academy Ebbsfleet, we are proud to work in partnership with Danny Ashen, a dedicated children's mental health counsellor that supports our students in understanding their emotions, developing healthy coping strategies, and building a stronger sense of self.

The Resilience Hub provides a safe and supportive space within the school where young people can explore their thoughts and feelings. Through both talking therapies and creative arts-based activities, students are encouraged to express themselves in ways that feel natural and empowering.

Why is The Resilience Hub important?

Children and young people face many challenges, whether it's family changes like bereavement or separation, or school related pressures such as bullying or exams. These experiences can lead to feelings of sadness, anxiety, anger or confusion.

The Resilience Hub is here to help students manage those emotions so that they don't interfere with their learning, friendships, or self-esteem. With the right support, young people can build resilience and thrive both in and out of the classroom.

What does The Resilience Hub look like at Leigh Academy Ebbsfleet?

Our school works closely with Danny Ashen, a qualified and experienced counsellor who supports within our Resilience Hub provision. Danny supports students both individually or in a group. He also collaborates with families and staff, promoting a whole school approach to emotional wellbeing and mental health.

How to access support

Students can self-refer by speaking directly to Danny. Alternatively, parents and carers can contact their child's Pastoral Leader or the Inclusion Manager to arrange an appointment.

Admissions

Joining us to secure a bright future

We have a well-developed process to make joining us a positive experience for students and their families. Leigh Academy Ebbsfleet is non-selective and as such, students will be offered places without reference to aptitude or ability. Applications for places in Year 7 should be made by completing the local authority's School Common Application Form.

Applications for places 'in-year' or to other year groups can be made directly to the academy. Please see our website for the admissions criteria and information about how places are allocated.

Once a place has been offered we begin working with you and your child to ensure their transition to secondary education is seamless. We provide a full induction programme that begins during the summer term to ensure students very quickly feel part of our community.

To complement the academic information provided by teachers in their primary school, we spend time visiting our new students as well as having individual meetings with you as a family in order to make sure we know your child well before they start their life with us.



A Family of Schools

We are part of a dynamic, vibrant multi-academy trust, founded in 2008. Today we encompass 33 academies across Kent, Medway and South-East London – primary, secondary and special.

In addition to providing high-quality educational opportunities for all of our children, aged from 2 months to 19 years, and their families, we are proud to provide many opportunities for lifelong learning.

These are delivered through the organisations under our umbrella: Thames Gateway Teaching School Hub, LAT Apprenticeships and Kent and Medway Training (KMT), which delivers routes into teaching.

We warmly welcome you to Leigh Academies Trust and look forward to sharing with you our passion for transforming lives and shaping communities through great education.



Leigh Academy
Ebbsfleet

Southfleet Road
Ebbsfleet Garden City
Kent
DA10 0BZ

01322 242252
info@ebbsfleet.latrust.org.uk
leighacademyebbsfleet.org.uk



LEIGH
Academies Trust

Education for a better world

Chief Executive: Simon Beamish
BA (Hons) MSc PGCE NPQH NLE FCCT

Carnation Road, Strood, Rochester, Kent ME2 2SX
01634 412200 | fax: 01634 412201
info@latrust.org.uk | leighacademiestrust.org.uk

Leigh Academies Trust is a registered company
(company no 2336587) and an exempt charity.